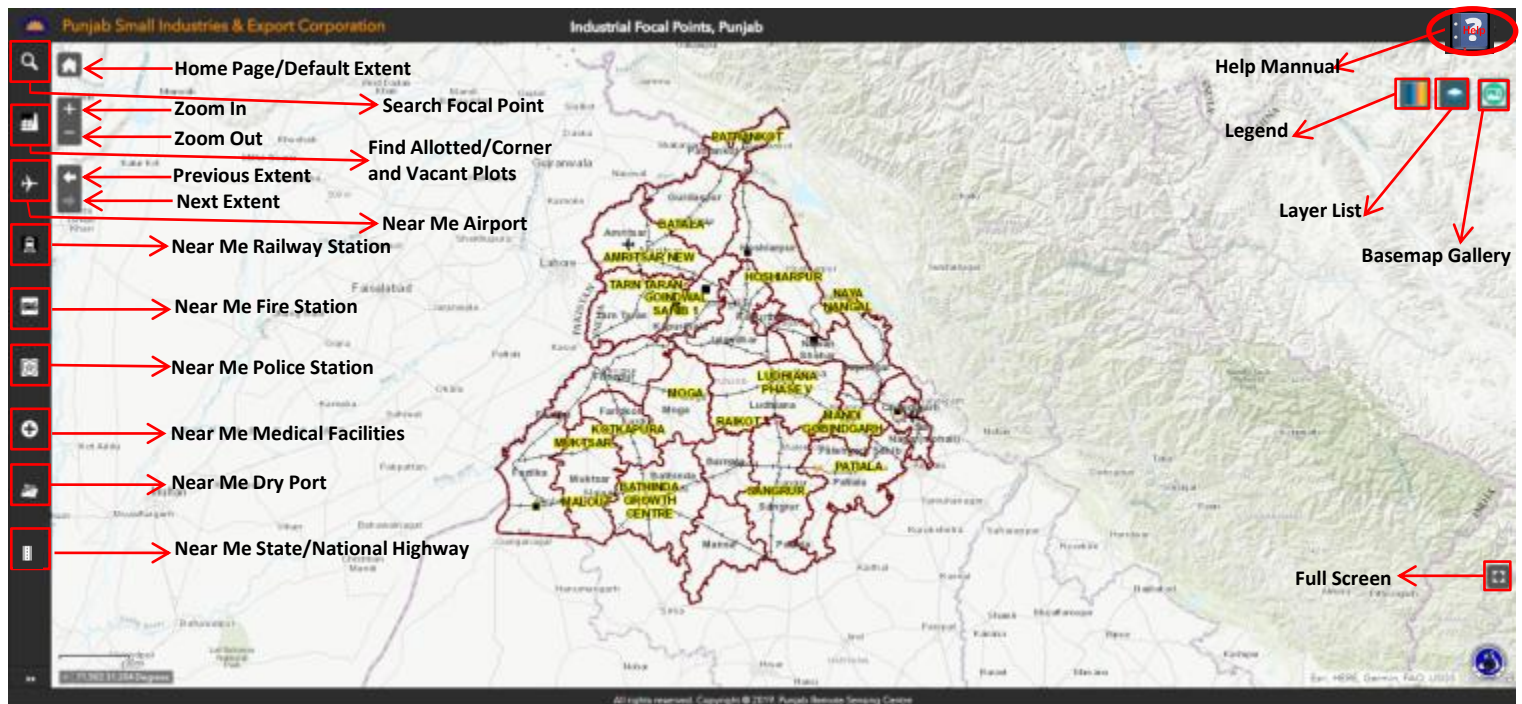



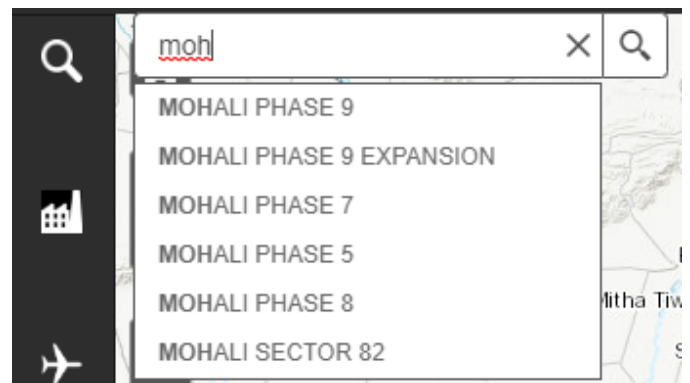
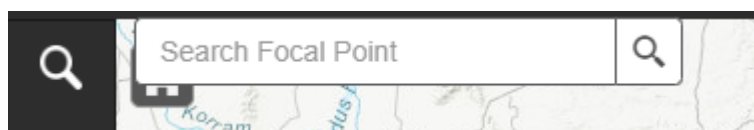
# Web GIS Application for PSIEC


URL : <https://gis-prsc.punjab.gov.in/IFPPunjab/>

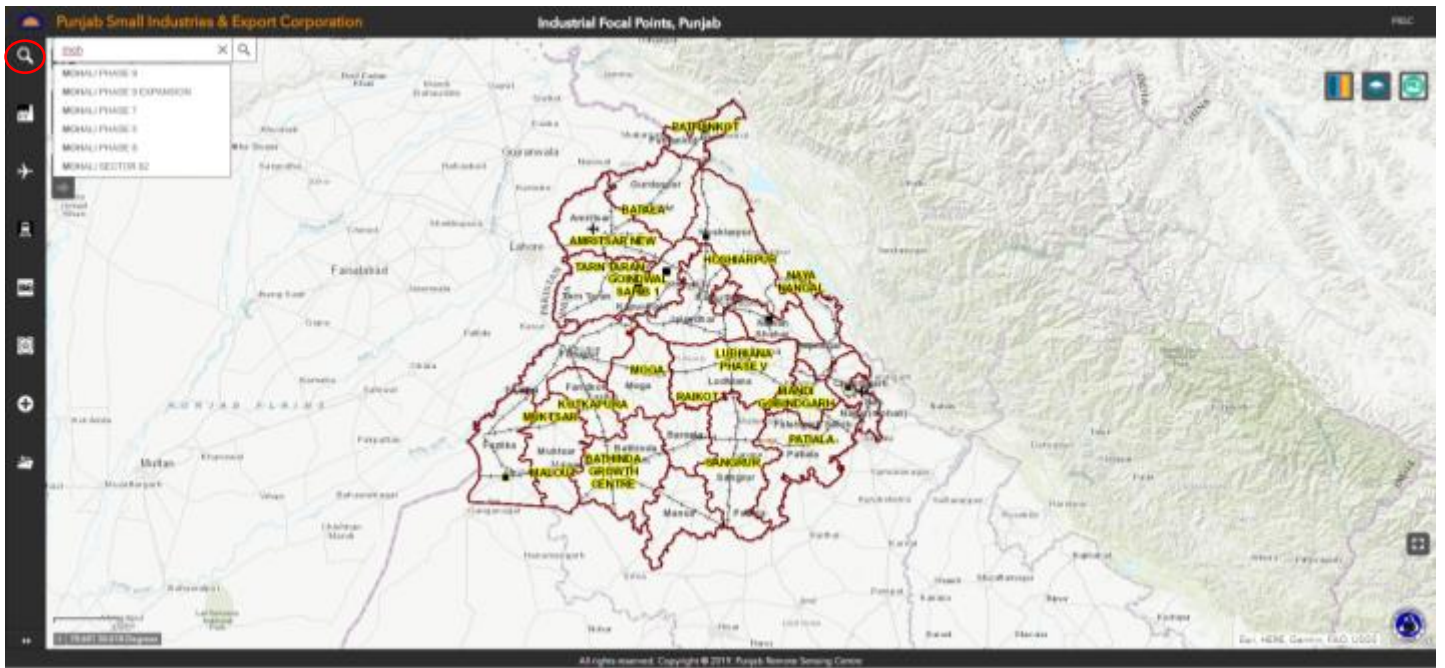


## 1) Search Industrial Focal Point (IFP)

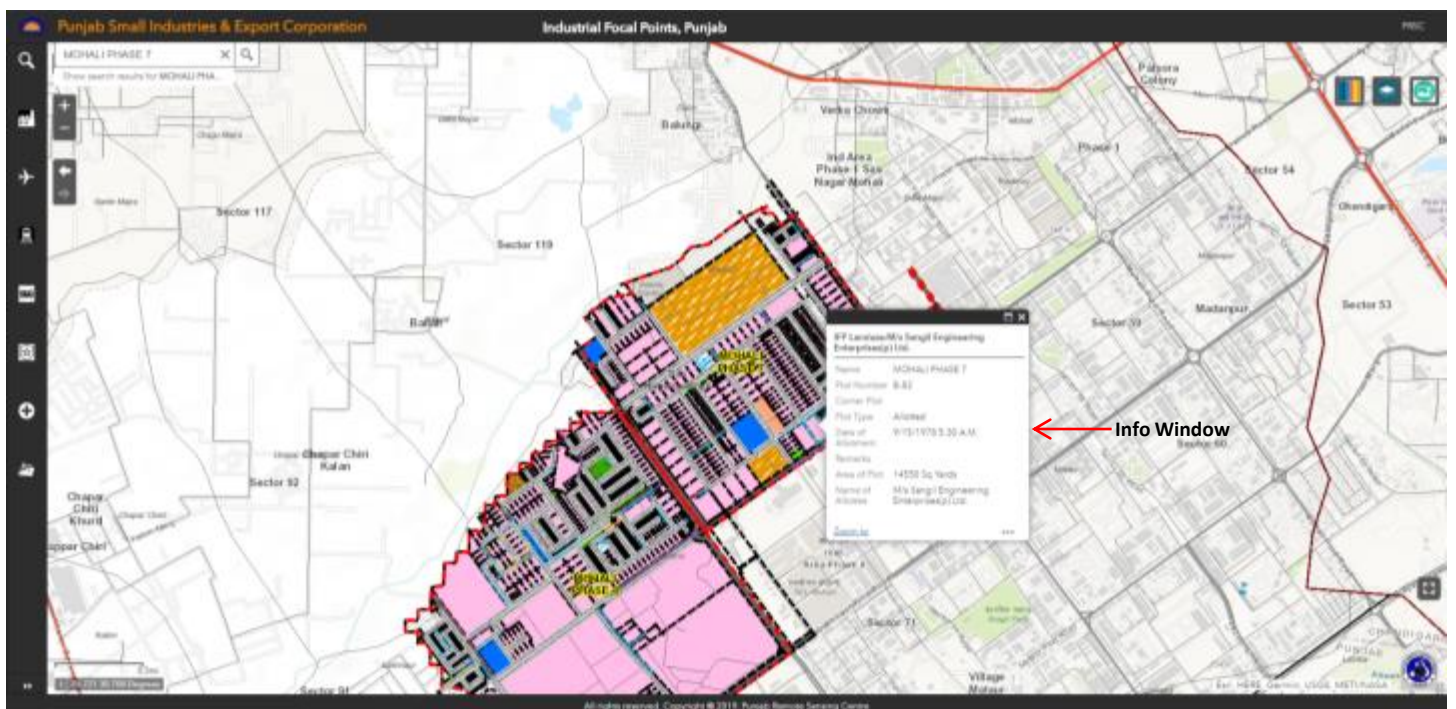
Click on  **Search Button** on top left corner of the map and type “Name of the Industrial Focal Point”.




- Select the IFP Name and click on  Button on the left. For example, I want to select **Mohali Phase 7 IFP**, I will type moh... , similar name options will be displayed, click on **Mohali Phase 7** to select it and click on the Search Button on the left. Similarly to select Amritsar New, type Amr...., similar name options for Amritsar will be displayed in the dropdown list. Select Amritsar New. The selected IFP will be zoomed and displayed. Then, click on the **X** (Clear Search) to see the IFP Landuse. Clicking on any of the plot will show the plot details



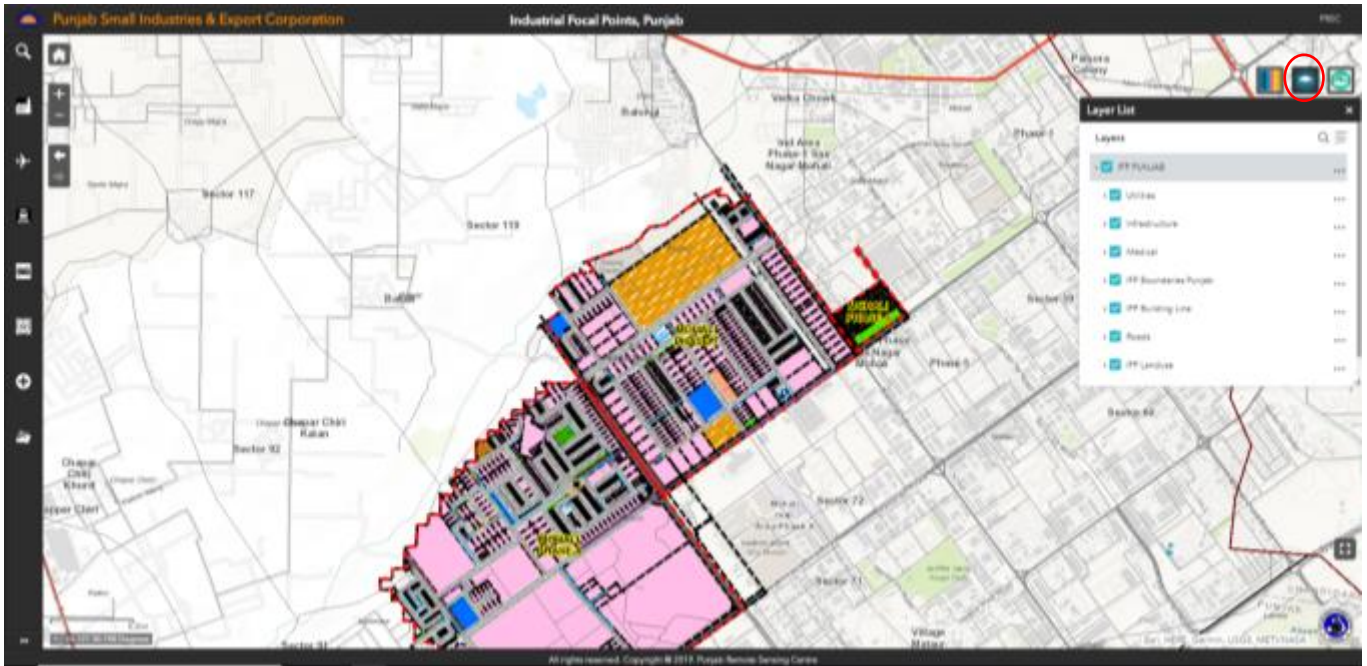
- Click any plot to show detail in Info Window



## 2) To View GIS Layers


- Click on  button on the Top Right corner of the map to view the GIS Layers.

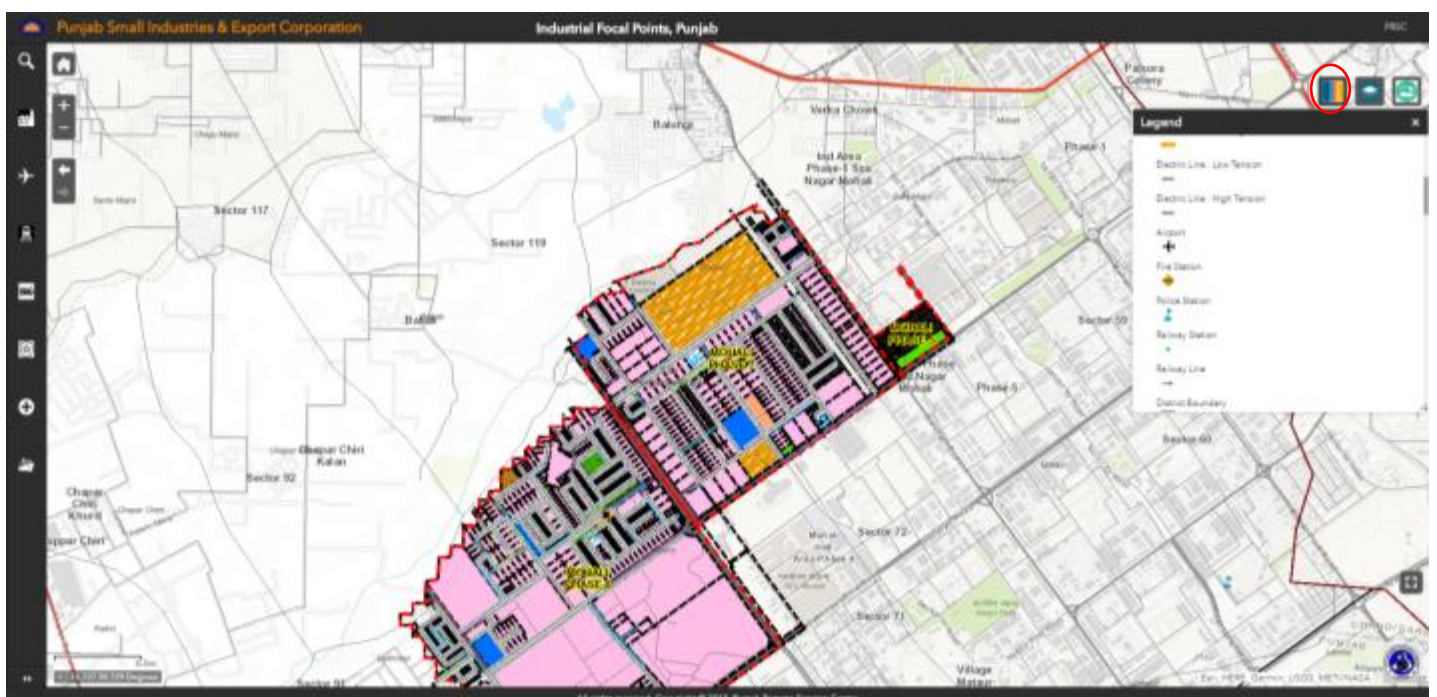






- These GIS Layers may be **ÖN** or **ÖFF** by **Checking** or **Unchecking** the Check Box
- Click on any Plot Number to see the details about that plot.
- + or – buttons on the Top Left corner may be used to Zoom or Unzoom the map.

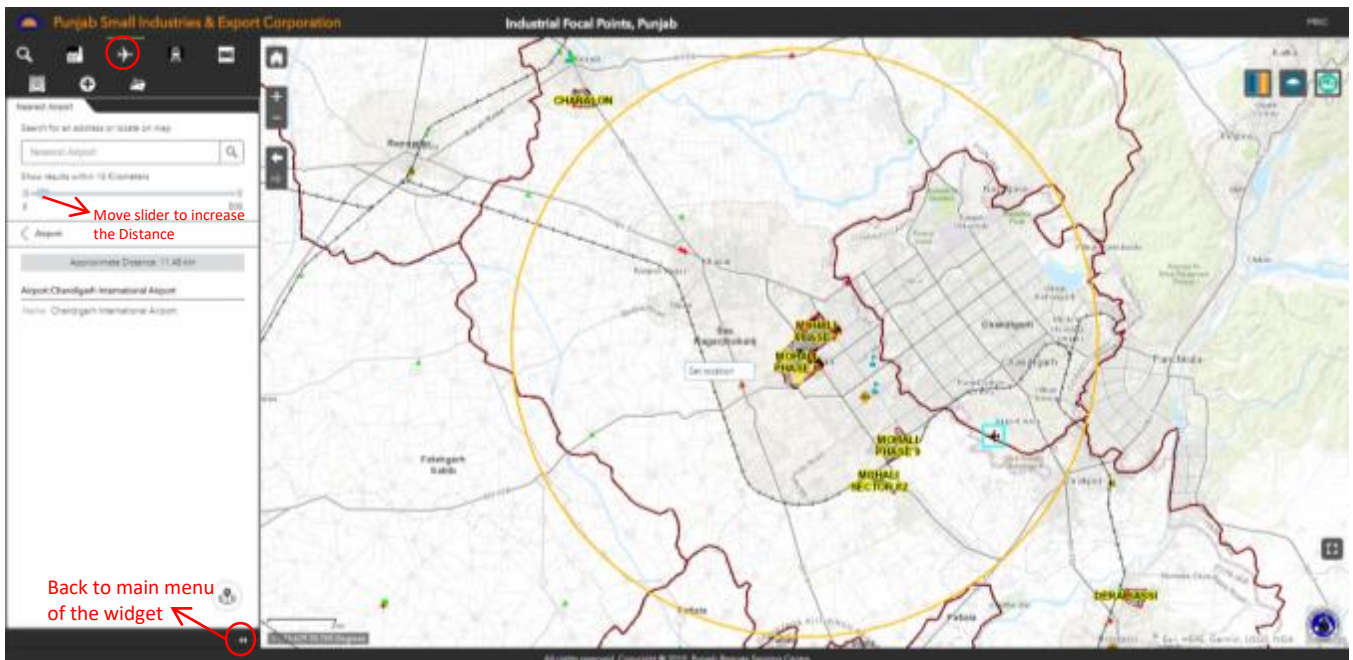
### 3) To View The Legend of the Map

- Click on  button on Top Right Corner of the map to view the Legend (Symbology of various features in GIS Layer/Layers).





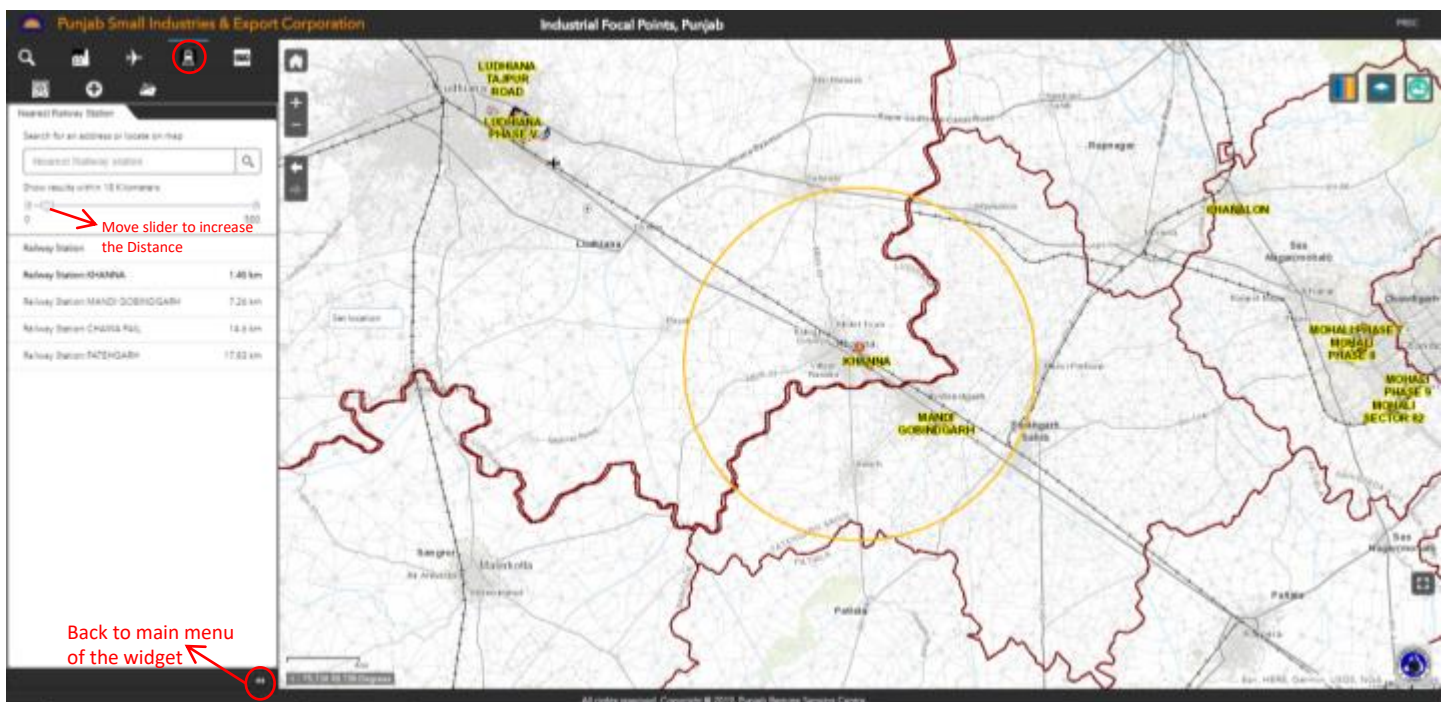
#### 4) Near Me Airport

- Click on  button to see Nearest Airport around a desired location. Click anywhere on the map where you wish to see the Airport in surrounding areas. Scroll the slider on the left pane to see the desired Airport.
- To click  this icon to back the widget.





#### 5) Near Me Railway Station

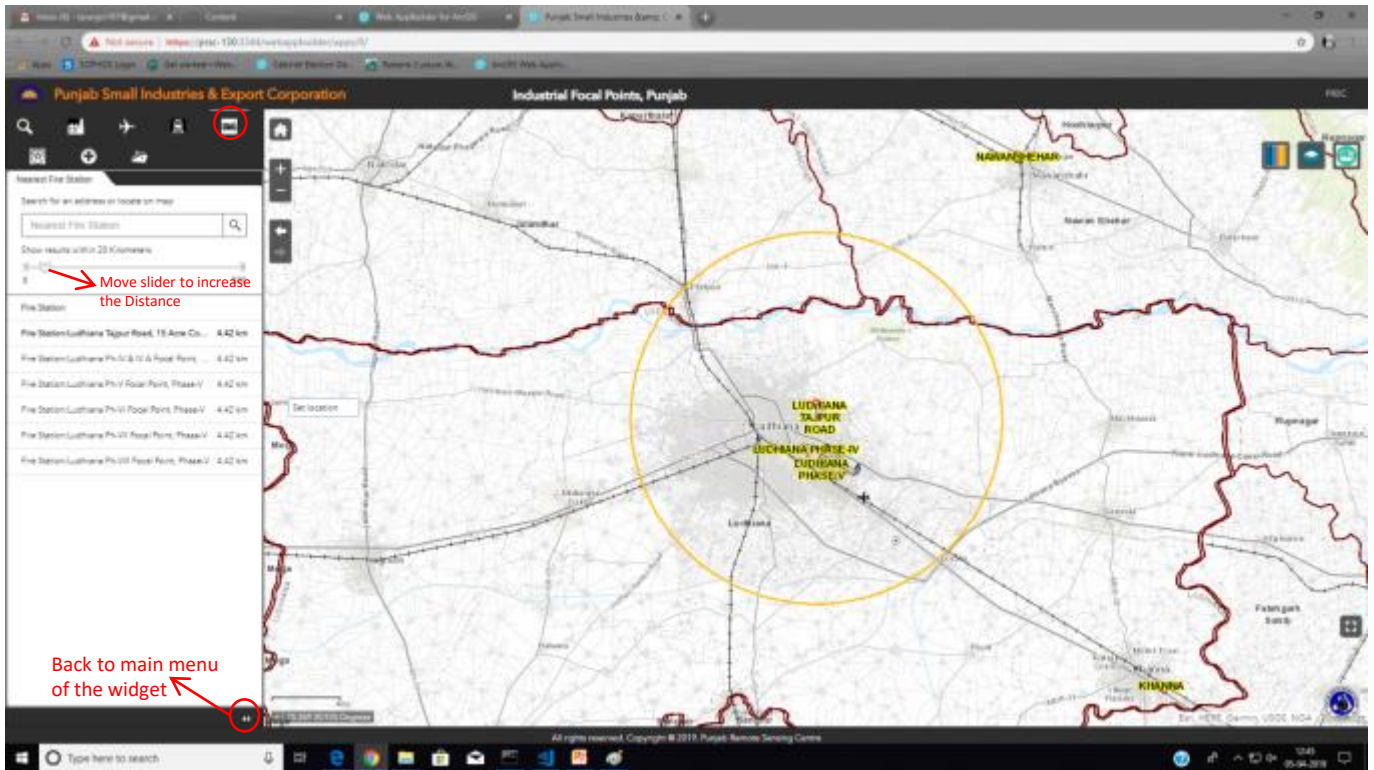
- Click on  button to see Nearest Railway station around a desired location. Click anywhere on the map where you wish to see the Railway Station in surrounding areas. Scroll the slider on the left pane to see the desired Railway Station.
- To click  this icon to back the widget.



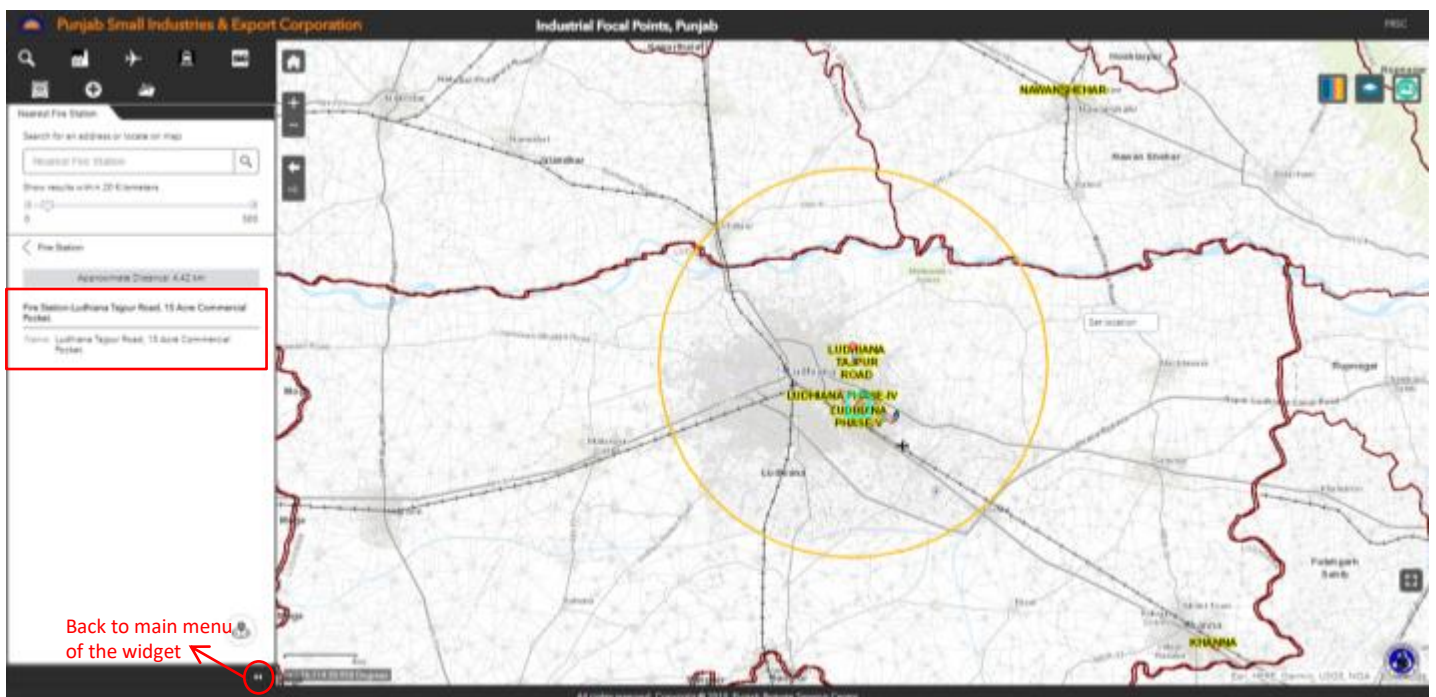


## 6) Near Me Fire Station

- Click on  button to see Nearest Fire station around a desired location. Click anywhere on the map where you wish to see the Fire Station in surrounding areas. Scroll the slider on the left pane to see the desired Fire Station.
- To click  this icon to back the widget.





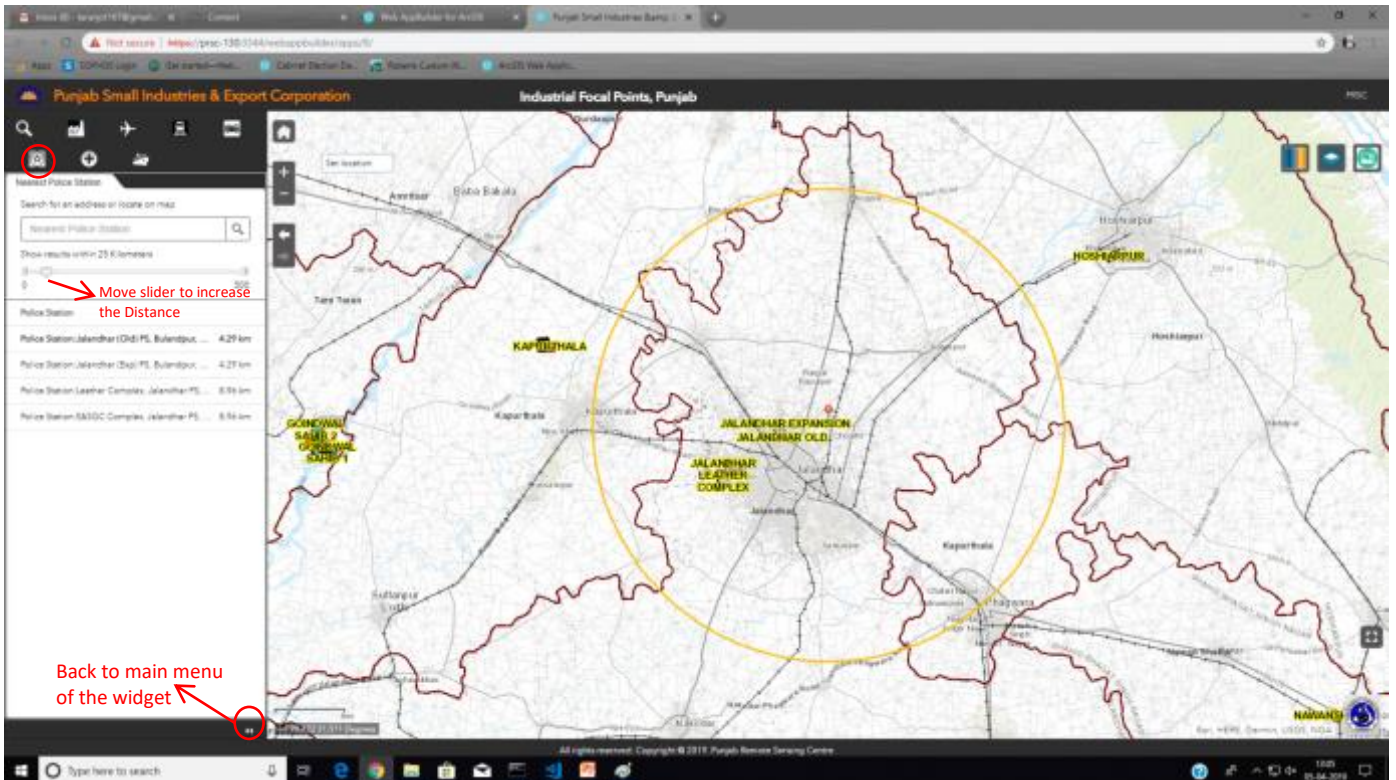
On the left pane the facilities and (number of facilities in bracket) will be displayed. For example, there are some Fire Station available within a distance of 20 Km. To see the details of Fire Station, click on “Fire Station” and it shows the Nearest Fire Station is at a distance of 4.42 Km.





Now click on the First Fire Station @ 4.42 Km, it will be selected on the map and its details will be displayed in the left pane.

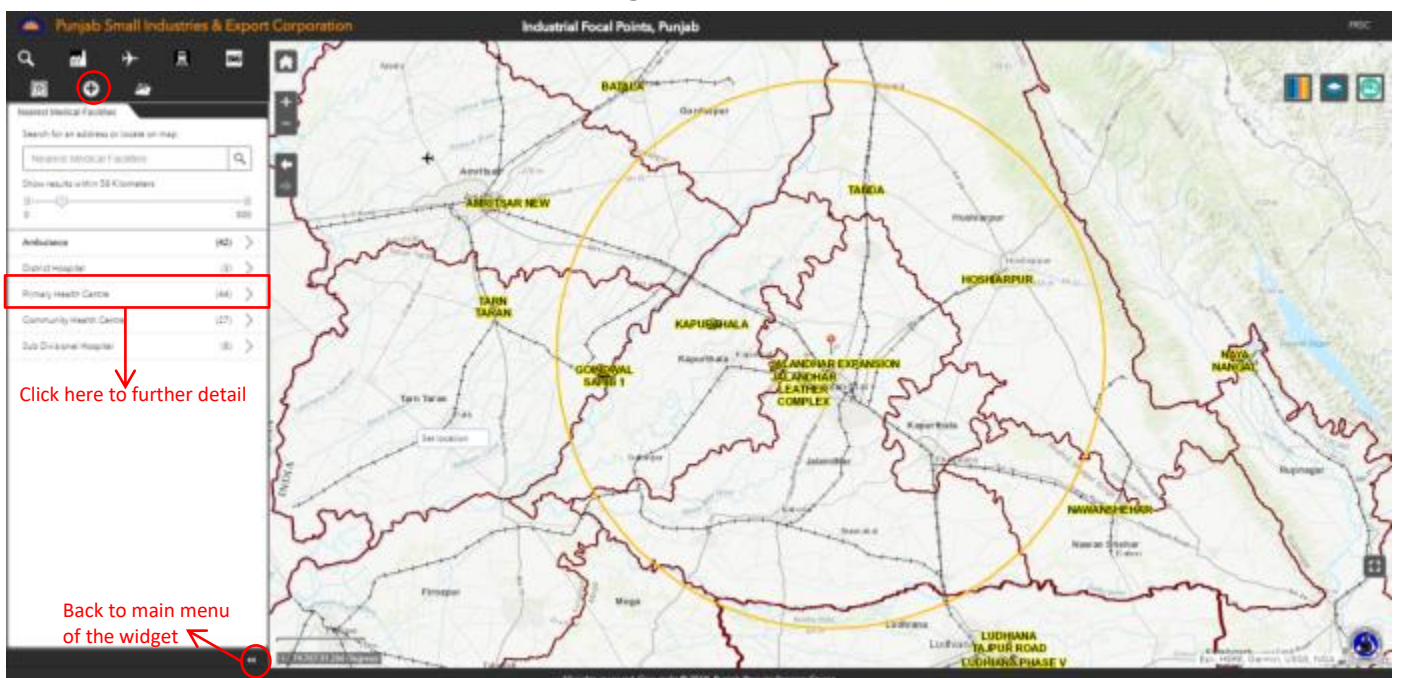
## 7) Near Me Police Station

- Click on  button to see Nearest Police station around a desired location. Click anywhere on the map where you wish to see the Police Station in surrounding areas. Scroll the slider on the left pane to see the desired Police Station.
- To click  this icon to back the widget.





## 8) Near Me Medical Facilities

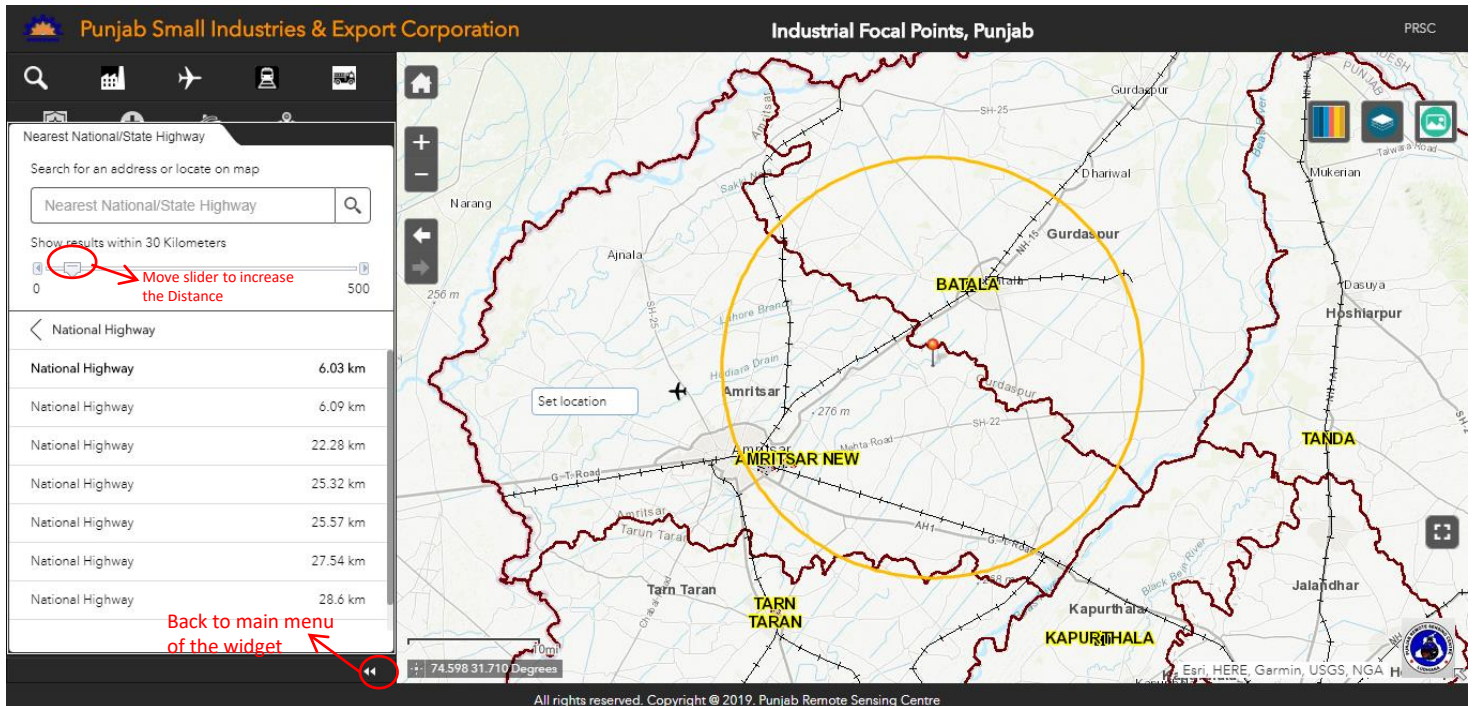
- Click on  button to see Nearest Medical Facilities around a desired location. Click anywhere on the map where you wish to see the Medical Facilities (Hospitals, Health Centre, Ambulance) in surrounding areas. Scroll the slider on the left pane to see the desired Medical Facilities.
- To click  this icon to back the widget.





## 9) Near Me National/State Highway

- Click on  button to see Nearest State and national Highway around a desired location. Click anywhere on the map where you wish to see the nearest Highways in surrounding areas. Scroll the slider on the left pane to see the desired National and State Highways.
- To click  this icon to back the widget.



**Punjab Small Industries & Export Corporation** Industrial Focal Points, Punjab PRSC

Nearest National/State Highway

Search for an address or locate on map

Nearest National/State Highway

Show results within 30 Kilometers

0 500

Move slider to increase the Distance

< National Highway



National Highway	6.03 km
National Highway	6.09 km
National Highway	22.28 km
National Highway	25.32 km
National Highway	25.57 km
National Highway	27.54 km
National Highway	28.6 km

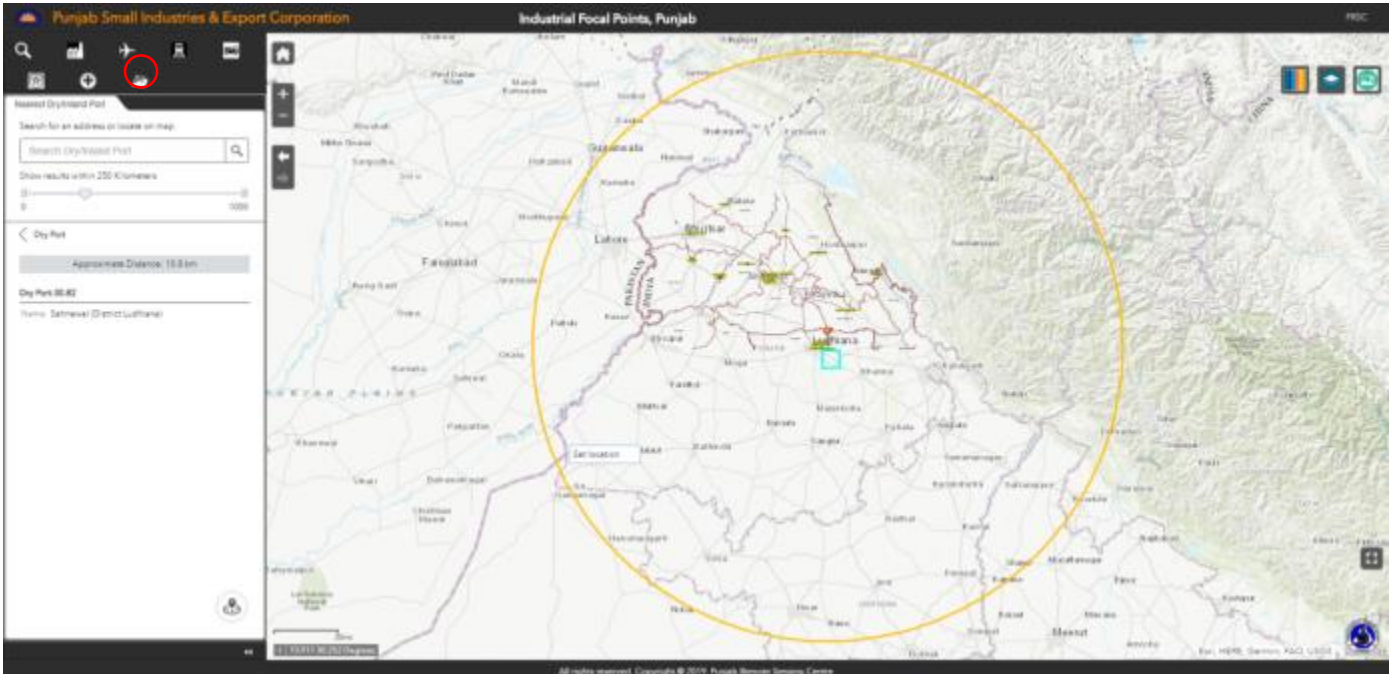
Back to main menu of the widget

74.598 31.710 Degrees


All rights reserved. Copyright © 2019. Punjab Remote Sensing Centre

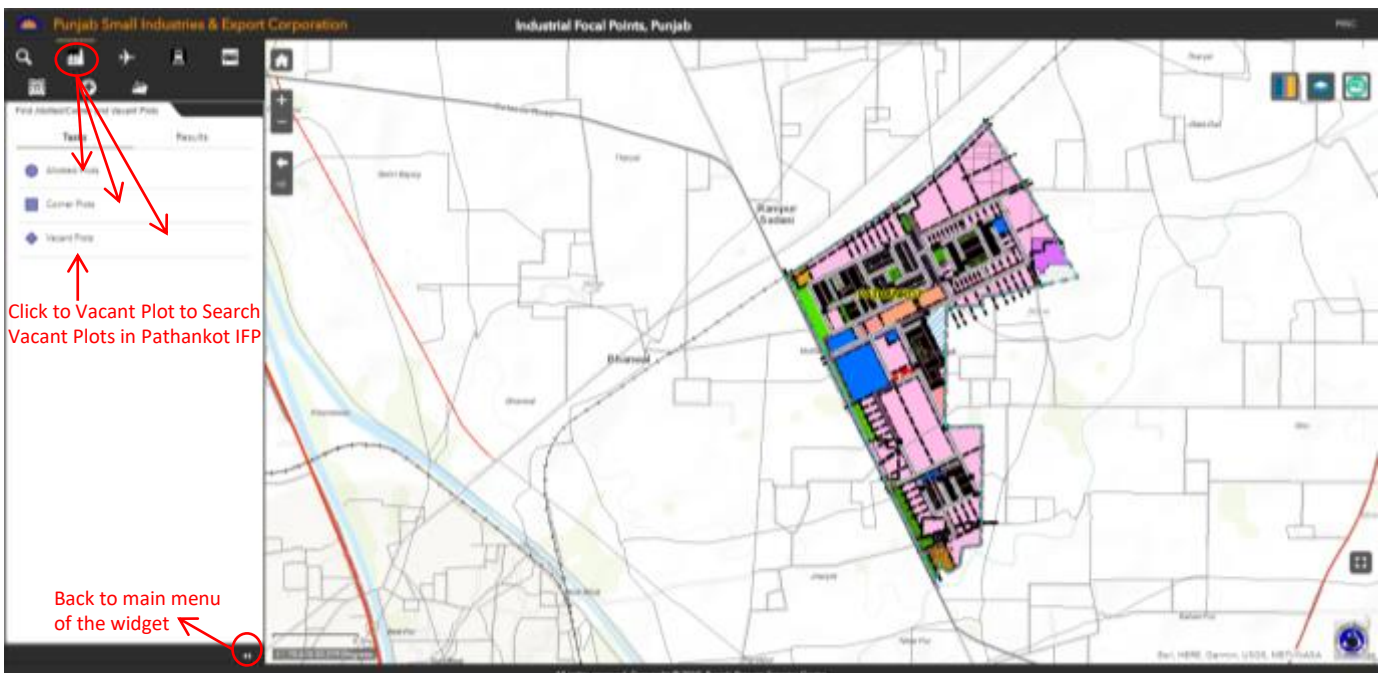
## 10) Near Me Dry Port

- Click on  button to see Nearest Dry Port around a desired location. Click anywhere on the map where you wish to see the Dry Port in surrounding areas. Scroll the slider on the left pane to see the desired Dry Port.
- To click  this icon to back the widget.



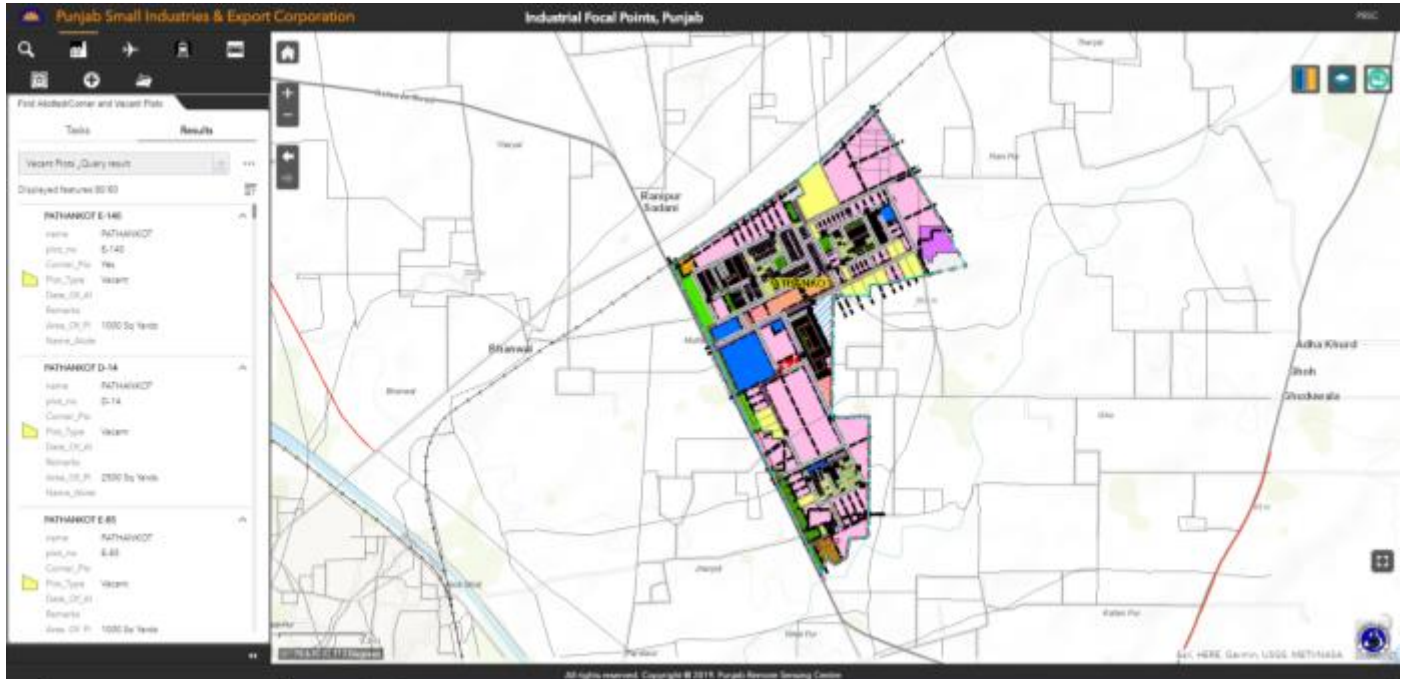
## 11) Find Allotted/Corner/Vacant Plots

- Click on  button on Top Left corner of the map to **Search Allotted, Corner OR Vacant Plots**.





It will show the Results for Vacant Plots on the left Pane of Map Window and Vacant Plots will also be Highlighted with Yellow Colour in the Map. Now click on any vacant plot in the left Pane to get its location in Pathankot IFP.



Now click on any vacant plot in the left pane. The selected vacant plot will be zoomed in the map and highlighted with Yellow colour.

